



CONSULTING ENGINEERS

# BUSINESS PORTFOLIO



MERIT | DEDICATION | SUSTAINABILITY



iStock  
by Getty Images™

iStock  
by Getty Images™

iStock  
by Getty Images™

iStock  
by Getty Images™

iStock  
by Getty Images™

iStock  
by Getty Images™

# ABOUT US...

iStock  
by Getty Images™

iStock  
by Getty Images™

iStock  
by Getty Images™

iStock  
by Getty Images™

MDS Consulting Engineers is 100% black owned consulting firm that provides electrical engineering services. The company was established in East London in 2010 and initially specialized in provision electrical engineering consulting services. In an effort to provide a holistic client satisfaction platform the company has diversified to mechanical engineering and project management.

To afford this expansion the company has opened one more office in Johannesburg. MDS Consulting Engineers acknowledges that human resource is the most valuable resource in an institution and has therefore has acquired a team of expert who have the necessary skills and expertise to deliver each client's individual need to utmost satisfaction.



# OUR VISION

MDS Consulting Engineers' vision is to unlock the continent's potential in providing professional consulting and project management services in the fields of electrical and mechanical engineering.



## MISSION STATEMENT

We intend to achieve our vision by; utilizing our internal expertise effectively so that we can deliver each client's need to his utmost satisfaction with a positive sustainable impact to their communities.

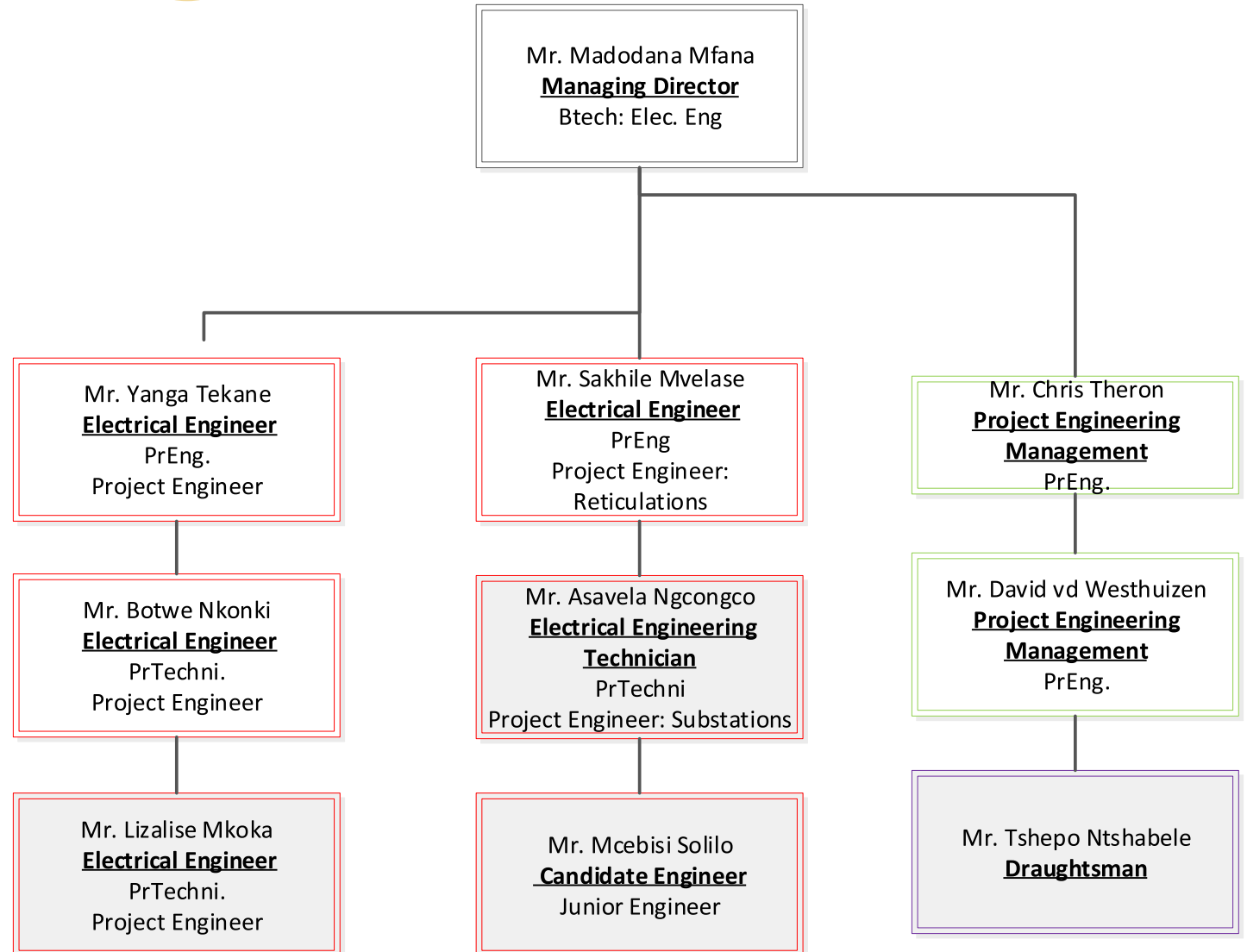


## ORGANISATIONAL STRUCTURE

### Overall Company Structure

As the figure below shows MDS Consulting Engineers has a staff component of one managing director, five Engineers and an administration officer. We also intend to create more internship and experiential training positions. This process will be done gradually in cooperation with local academic institutions.

# ORGANIZATIONAL STRUCTURE



# CORPORATE CAPABILITIES

MDS Consulting Engineers has special knowledge in the fields of:

## POWER DISTRIBUTION

The service comprises:

I. Building Services

II. Infrastructure (Medium/High voltage Reticulation)

III. Industrial services

The above will include:

- i. Electrical power distribution in buildings and industrial plants;
- ii. Urban electrification and rural reticulation;
- iii. Low Voltage to Medium Voltage distribution lines;
- iv. Medium Voltage and High Voltage distribution and transmission substations;
- v. Protection schemes for power distribution systems;
- vi. Network planning and upgrades;
- vii. Motor designs and control.

## PROJECT MANAGEMENT

We focus on the implementation of multi-service projects by applying the following;

i. Project costing, cost control and project scheduling

ii. Project engineering

iii. Contract Administration and facilitation of claims

iv. Financial management and accounting

v. Construction Management



# TARGET MARKET

Our target includes but not limited to the following;

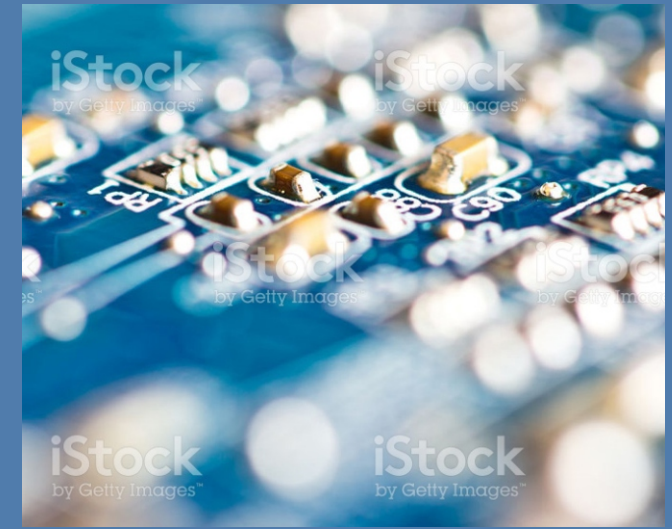
- i. Eskom and Subsidiaries
- ii. Local and District Municipalities
- iii. National and Provincial Government Departments
- iv. Metrorail and Transnet
- v. Coega Development Corporation and East London IDZ
- vi. Private Home Owners
- vii. Private Property Developers



# HUMAN RESOURCES

**MDS Consulting Engineers** has the following staff compliment;

- 1 x Managing Director
- 7 x Professional Engineers
- 1 x Professional Engineering Technologists
- 3 x Professional Engineering Technicians
- 2 x Candidate Engineer
- 1 x Candidate Engineering Technicians
- 3 x Professional Project Managers
- 1 x Draughtsman
- 1 x Environmental Specialist
- 1 x Geotechnical Specialist
- 2 x general administration staff (female)



## RESOURCES

The following resources and infrastructure is available:

- a) General office facilities such as telephone, fax, computer and a printer;
- b) Computers and printers;
- c) Transport for field work and supervision;
- d) Software such as:
  - i. CAD programs e.g. Microstation and Auto-Cad
  - ii. HV, MV, LV design packages such as CART, Dig silent and ReticMaster



# WORKING EXPERIENCE

<b>Project Name</b>	<b>Description</b>	<b>Contract Amount</b>	<b>Client Name</b>
Turnkey Rural Electrification of Matatiele Villages (Ramafole)	Turnkey Electrification design of MV.LV and 800 HousesConnections	R24 130 000.00	Matatiele Local Municipality
Tutnkey Gubenxa& Maxongo Electrification	Turnkey Electrification, 146 House Connections	R13 096 224,67	Sakhisizwe Local Municipality
Philani Clinic	Point of Supply	R263 809,36	Eskom
Nkanga Clinic	Line Deviation	R280 251,50	Eskom
Matatiele infill	MV/LV Electrification&1505 house connections	R45 008 066,70	Eskom
Sakhele Clinic	Point of Supply and SWER Line upgrade	R329 260,08	Eskom
Flagstaff CHC	Line Deviation and Point of Supply	R1 119 885,72	Eskom
Temba Mzizi jss	Line Deviation	R163 809,36	Eskom
Villarosa Alterations	Conversion to Student Accommodation	R3 000 000,00	Bayete Capital
IOC Data Centre	Design MV/LV Switchgear& Lighting	R163 809,36	Bayete Capital
Joburg Metro Data Centre	Design MV/LV Switchgear& Lighting	R6 000 900,01	Advances Projects & People
Roordeport Data Centre	Design MV/LV Switchgear& Lighting	R4 690 600,01	Advances Projects & People
Botha Sigcau	Conversion & alteration to open office	R35, 745,221.75	Dept of Public Works
Tyamzamshe Building Renovations	Electrical Engineering Services	R7 428 900,01	Dept of Public Works
Amatole Workshop	Electrical Engineering Services	R3 611 760,54	Dept of Public Works
Upper Tobotshana JPS	Electrical Engineering Services	R16, 425,306.00	Dept of `Public Works
AB350 Bus Repairs Workshop	Internal Design and Point of Supply	R2 496 803,24	Mayibuye Bus Corporation
Bomvini JSS	Electrical Engineering Services	R18, 306,963.30	Coega Development Corporation
Dumba JSS	Electrical Engineering Services	R17, 643,907.68	Coega Development Corporation
Esididini PS- Upgrades to Existing Buildings, Construction of New Classrooms and Ablution Blocks	Electrical Engineering Services	R22, 989 293.58	Coega Development Corporation
Dannhuaser PS- Upgrades to Existing Buildings, Construction of New Classrooms and Ablution Blocks	Electrical Engineering Services	R16, 289 889.78	Coega Development Corporation

# CONTACT US...

Registered Company Name:  
MDS CONSULTING ENGINEERS PTY LTD

Trading Name:  
MDS CONSULTING ENGINEERS PTY LTD

Head Office:  
Unit 2 | 4TH Avenue | Gonubie | East London | 5200  
Telephone 043 721 0732 | Fax 086 547 8773

Branch Office:  
242 on Jean Avenue | Die Hoewes | Centurion | PTA | 0163  
Telephone 012 003 1566 | Fax 086 547 8773

Postal Address:  
P.O BOX | 650522 | Benmore | JHB | 2010

E-mail [info@mdsconsult.co.za](mailto:info@mdsconsult.co.za)

Website [www.mdsconsult.co.za](http://www.mdsconsult.co.za)

ESKOM Vendor NO: 11085422  
City Power Vendor NO: MDS001